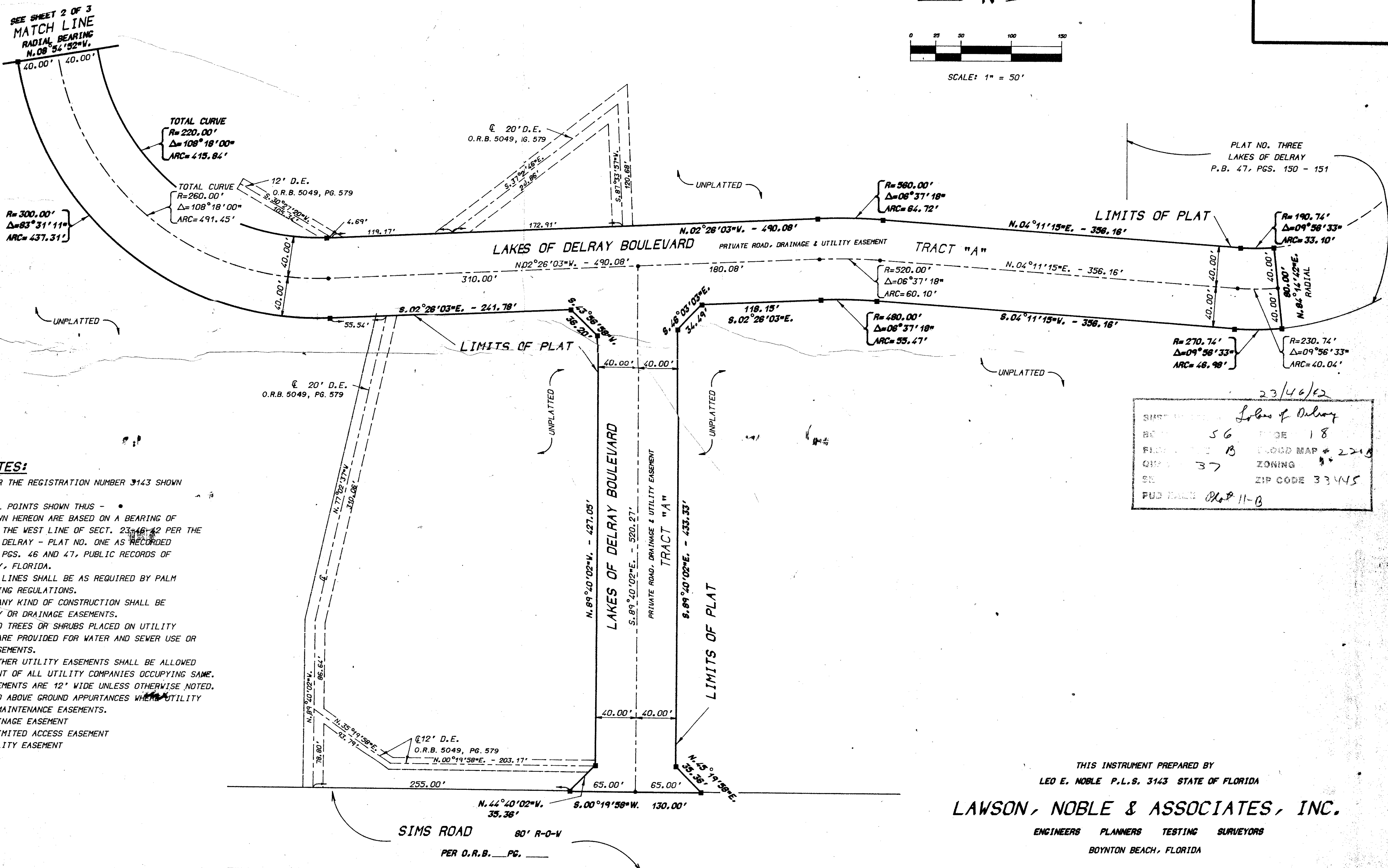
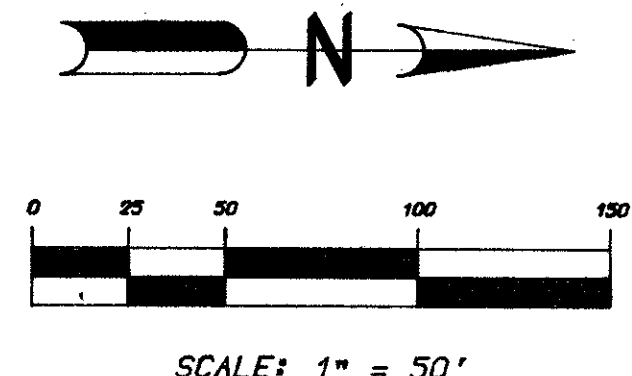
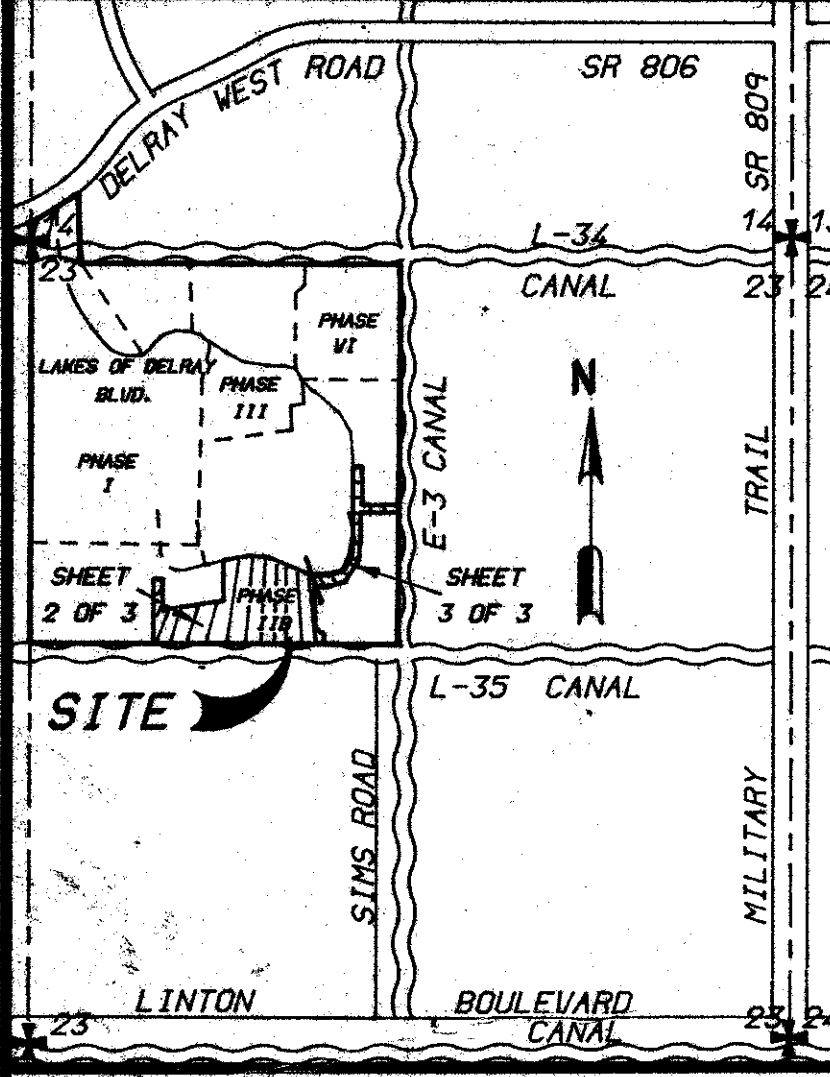


PLAT NO. 11-B LAKES OF DELRAY

BEING A PORTION OF THE NORTHWEST ONE - QUARTER
OF SECTION 23, TOWNSHIP 46 SOUTH, RANGE 42 EAST
PALM BEACH COUNTY, FLORIDA

JUNE, 1986
SHEET 3 OF 3 SHEETS



SURVEYOR'S NOTES:

- 1.) ALL P.R.M.'s BEAR THE REGISTRATION NUMBER 3143 SHOWN THUS - ■
- 2.) PERMANENT CONTROL POINTS SHOWN THUS - ●
- 3.) THE BEARINGS SHOWN HEREON ARE BASED ON A BEARING OF N.00°05'05"E. ON THE WEST LINE OF SECT. 23-46-42 PER THE PLAT OF LAKES OF DELRAY - PLAT NO. ONE AS RECORDED IN PLAT BOOK 42, PGS. 46 AND 47, PUBLIC RECORDS OF PALM BEACH COUNTY, FLORIDA.
- 4.) BUILDING SETBACK LINES SHALL BE AS REQUIRED BY PALM BEACH COUNTY ZONING REGULATIONS.
- 5.) NO BUILDINGS OR ANY KIND OF CONSTRUCTION SHALL BE PLACED ON UTILITY OR DRAINAGE EASEMENTS.
- 6.) THERE SHALL BE NO TREES OR SHRUBS PLACED ON UTILITY EASEMENTS WHICH ARE PROVIDED FOR WATER AND SEWER USE OR UPON DRAINAGE EASEMENTS.
- 7.) LANDSCAPING ON OTHER UTILITY EASEMENTS SHALL BE ALLOWED ONLY AFTER CONSENT OF ALL UTILITY COMPANIES OCCUPYING SAME.
- 8.) ALL DRAINAGE EASEMENTS ARE 12' WIDE UNLESS OTHERWISE NOTED.
- 9.) THERE SHALL BE NO ABOVE GROUND APPURTANCES WHERE UTILITY EASEMENTS CROSS MAINTENANCE EASEMENTS.
- 10.) D.E. DENOTES DRAINAGE EASEMENT
- 11.) L.A.E. DENOTES LIMITED ACCESS EASEMENT
- 12.) U.E. DENOTES UTILITY EASEMENT

23/46/42

SUBJECT	Lakes of Delray
BOOK	56
PAGE	18
FILE	B
GRID	37
ZONING	3*
ZIP CODE	33445
PUB. DATE	Plat 11-B

THIS INSTRUMENT PREPARED BY
LEO E. NOBLE P.L.S. 3143 STATE OF FLORIDA
LAWSON, NOBLE & ASSOCIATES, INC.
ENGINEERS PLANNERS TESTING SURVEYORS
BOYNTON BEACH, FLORIDA

PLAT No. 11-B LAKES OF DELRAY 56/18

0267-301

L.V.D.D. EQUALIZING NO. 3 CANAL
O.R.B. 2264, PG. 601
O.R.B. 3557, PG. 1875